

## FIREPLACE INSERT WITH WATER SHIELD

### SERIES **KA TRV**, **KA PAV**

The fireplaces **KA TRV** are an elegant addition to the interior of your home. They are an economical solution or an alternative for the heating of your space.

The fireplaces are constructed with a high quality materials and are simple to install. They are intended to be built-in in an alcoves or finished with stone or plasterboard. The fireplaces operate with an open or closed heating system with forced circulation and maximum operation pressure 2,5 bar.

The fireplaces have **steel body** with water shield in all three sides of the hearth and collector above the combustion chamber. The bottom of the hearth consists of cast iron grate and fireclay bricks. The space underneath the grate is connected through a pipe Ø108 to the outside air that provides oxygen for the combustion.

The design is finished with a **panoramic tempered glass** that reveals the beauty of the fire and gives warmth and comfort in your home.

The fireplaces conform with the European standards and guarantee long and seamless operation life.

#### GERMAN MECHANISM FOR DOOR OPENING

Allows the opening of the door vertically through a gear chain mechanism and horizontally through hinges.



**VERTICAL OPENING**

For fuel loading and ash cleaning.  
Thanks to the specially designed gear chained mechanism with counterweights, the door remains blocked in the desired position.



**HORIZONTAL OPENING**

For ease of glass cleaning.



**KA TRV**



**KA PAV**

#### DIGITAL CONTROL PANEL



To be installed on the side of the fireplace cladding.  
User friendly and convenient.

#### CERAMIC PANORAMIC GLASS

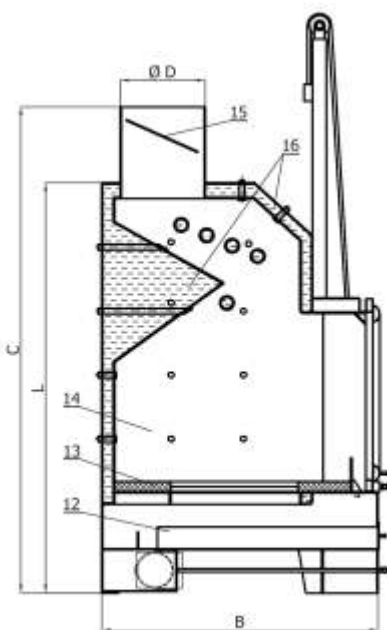
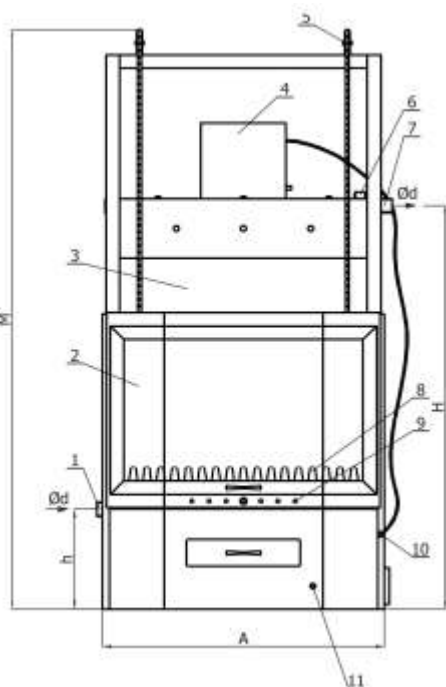


Excellent visibility of the flame and direct luminance in the space.



# TECHNICAL CHARACTERISTICS

Type fireplace		KA 18 TRV	KA 25 TRV	KA 33 TRV	KA 40 TRV	KA 18 PAV	KA 25 PAV	KA 33 PAV	KA 40 PAV
Total nominal heating capacity	kW	19 - 21	25 - 27	35 - 38	42 - 45	19 - 21	25 - 27	35 - 38	42 - 45
Nominal heating capacity of the water shield	kW	16 - 18	21 - 23	30 - 33	37 - 40	16 - 18	21 - 23	30 - 33	37 - 40
Max. operation working pressure	bar	2,5	2,5	2,5	2,5	2,5	2,5	2,5	2,5
Max operation working temperature	°C	85	85	85	85	85	85	85	85
Minimum draught in nominal heating capacity	Pa	12±2	12±2	15±2	18±2	12±2	12±2	15±2	18±2
Type of fuel		Wood or wooden briquettes							
Nominal efficiency	%	76,3	74,1	74	74	76,3	74,1	74	74
T° fumes	°C	291	276	254	268	291	276	254	268
CO in 13% contain of O <sub>2</sub> in nominal heating capacity	%	0,4112	0,3146	0,4116	0,5125	0,4112	0,3146	0,4116	0,5125
Combustion air inlet	mm	Ø76	Ø76	Ø89	Ø108	Ø76	Ø76	Ø89	Ø108
Flue pipe diameter	ØD	mm	150	200	250	150	200	250	1 1/4"
Height without the flue pipe	L	mm	995	1095	1200	1380	995	1095	1200
Delivery / Return diameter	Ød	inch	1"	1"	1 1/4"	1 1/4"	1"	1"	1 1/4"
Height of the return	h	mm	246	246	278	298	246	246	278
Height of the delivery	H	mm	980	1080	1180	1360	980	1080	1360
Volume of the water shield	L		70	82	160	165	70	82	160
Overall dimensions:									
- width	A	mm	664	750	820	830	664	750	820
- depth	B	mm	577	630	805	877	522	573	710
- height	C	mm	1260	1360	1470	1650	1260	1360	1470
- height	M	mm	1430	1430	1720	1740	1430	1430	1740
Weight		kg	210	230	290	340	184	205	260



## LEGEND

1. Ceramic glass door
2. Body
3. Outlet hot water - 1 1/4" M
4. Position for probes on the board
5. Flue pipe
6. Mechanism for vertical door opening
7. Protection ridge
8. Openings for primary air with slider
9. Inlet cold water - 1 1/4" M
10. Regulation of the valve for the exhaust gases
11. Regulation of the valve for the outside air
12. Bottom - cast iron grate and fireclay bricks
13. Combustion chamber
14. Chimney clap connected with an armored conductor with a handle.
15. Water shield

"LAKAL" EOOD has been on the Bulgarian market for 30 years. The main field of operation is design, manufacturing, import and installation of heating and solar systems. The company has a team of highly qualified technicians, supplied with modern equipment that operate throughout the country. Since 1999 "LAKAL" has its own design and development department that constructs and manufactures steel combined solid fuel and pellet boilers with outputs 25, 35, 55kW, fireplaces with water shield from 10 up to 60kW.

The company is an authorized dealer and offers a whole range of necessary materials and equipment for your heating installation – pellet, oil and gas boilers, oil, gas and pellet burners, radiators, armature and press fittings, pipe heat insulation, wall mounted and condensed boilers.

**Trust the experience and professionalism of our experts and "LAKAL" will take care of your comfort!**

**Stores:** PLOVDIV 4004; 136, N.Vaptsarov Blvd., +359/32-673-020  
 VARNA 9000; 60A, Gen. Kolev Str., +359/52-607-176  
 V. TARNOVO 5000; 1, Poltava Str., +359/62-638-995

**Head office:** BULGARIA, Plovdiv 4004, 136, N. Vaptsarov Blvd.  
 +359/32-673-010 tel.  
 +359/32-676-006 tel.  
 +359/32-672-900 fax  
 e-mail: office@lakal-bg.com, [www.lakal-bg.com](http://www.lakal-bg.com)